


## Quick K9 Koordinator Installation

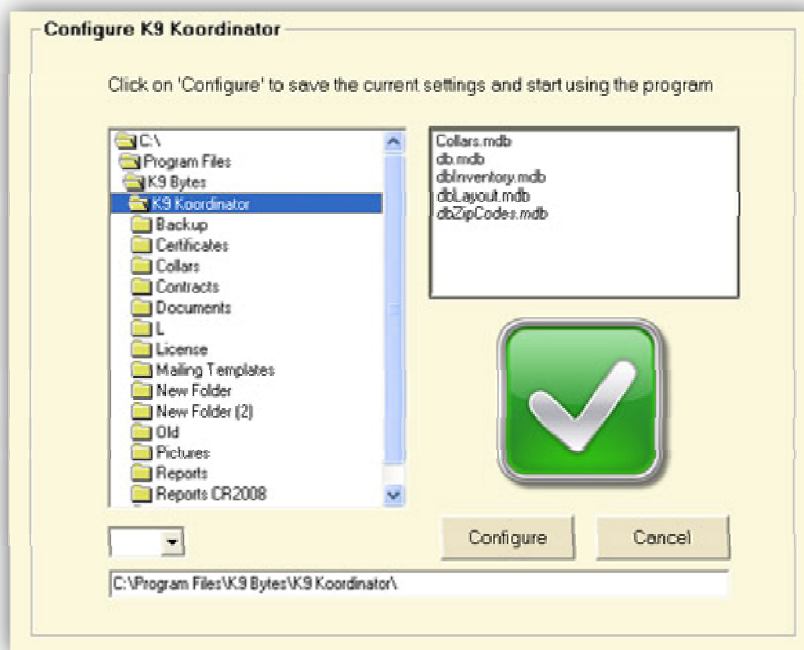
1. Install the K9 Koordinator in your computer. Just follow the steps to completion; there are very simple instructions that will appear on the screen.

 For simplicity, it is recommended to use the default path suggested in the installation. The path **C:\Program Files\K9 Bytes\K9 Koordinator**

2. Open the K9 Koordinator clicking on the icon in your desktop.



3. A 'Configure K9 Koordinator' screen will come up.
4. Browse to the installation folder chosen in step 1. The default path is C:\Program Files\K9 Bytes\K9 Koordinator
5. Click 'Verify.' A green check mark will appear if everything worked out properly.
6. Click 'Configure.'



7. From the 'Select Employee' menu, select the user: **K9 Bytes, Software.**
8. Fill in the password: **k9bytes** (all lower case, passwords are case sensitive).
9. To have access to the set up, use **Owner, Software** with password **secret**.



## Download the K9 Koordinator Manual

1. Load the K9 Koordinator
2. In the top navigation bar click on 'Help' and 'User's Guide.'
3. The download of the manual will start in your default web browser. Depending on your Internet connection speed the download could take several minutes.